

Bluevibe Software installation guide

CD/USB Disk burning

Download the version that best suites you using the links in the email you have received.

Windows 7 users – CD:

Step 1:

Right-click on an ISO image and choose "Burn disc image"

Step 2:

Select a disk drive that can burn CDs (CD-R) and press "Burn".

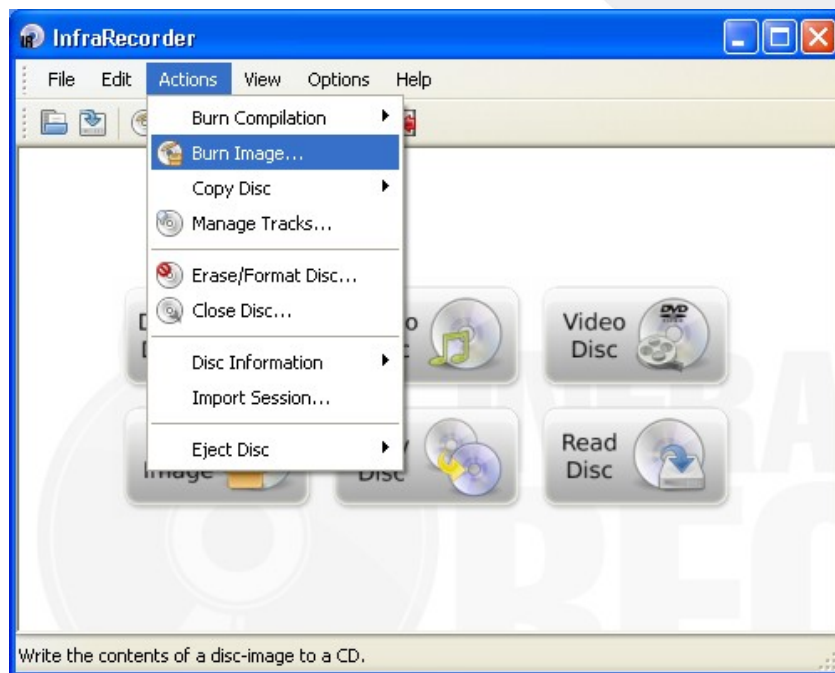
Windows 2000/XP/Vista users – CD:

Step 1:

Download and install Infra Recorder (<http://infrarecorder.org/>)

Step 2:

Open Infra Recorder and select from the menu on top: "Actions"->"Burn Image..."



Step 3:

Select the file you have downloaded and click "Open".

Step 4:

In the dialog, click "OK".

Linux users (terminal) – CD:

Step 1:

To identify CD ROM devices type: `wodim --devices`

```
~> wodim --devices
wodim: Overview of accessible drives (1 found) :
-----
 0  dev='/dev/scd0'      rwrw-- : 'HL-DT-ST' 'DVDRAM GH10N'
-----
```

wodim was formerly known as cdrecord

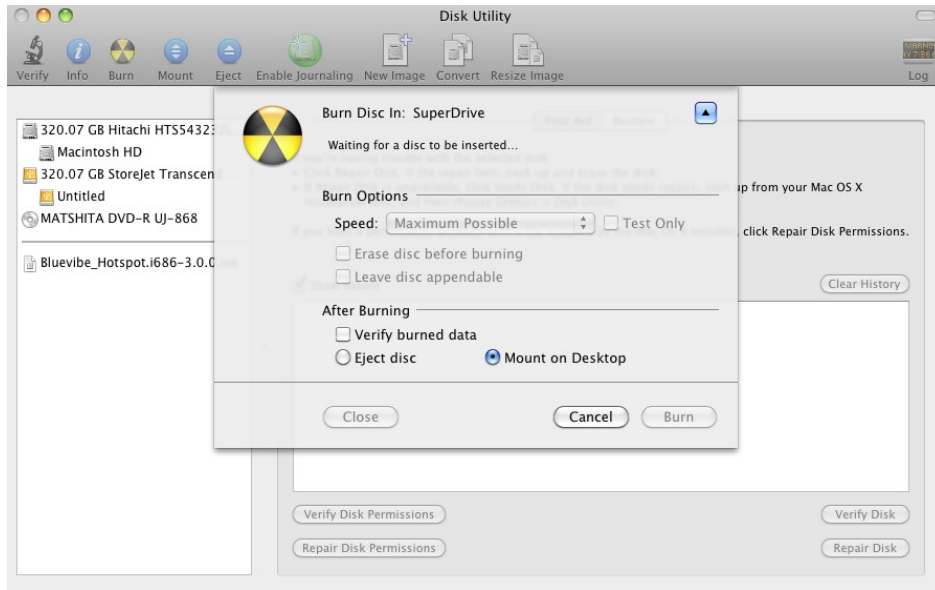
Step 2:

Replace `/dev/scd0` of the picture above with your CD recorder and type:

`wodim dev=/dev/scd0 -v -data downloaded_file.iso`

MacOS users – CD:

1. Run Disk Utility
2. Click on Burn icon
3. Select the .iso file you just downloaded.



4. Insert a blank CD/DVD in the DVD Recorder
5. Click Burn button

Windows users – USB:

Step 1:

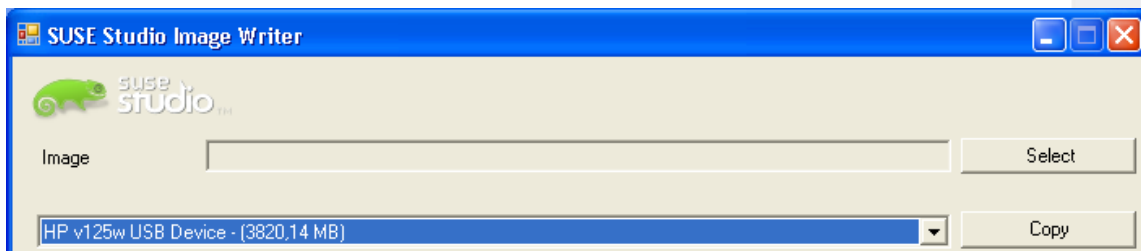
Download and install ImageWriter
(<ftp://ftp.berlios.de/pub/kiwi/ImageWriter.exe>)

Step 2:

Plug the USB drive in one of computer's USB ports

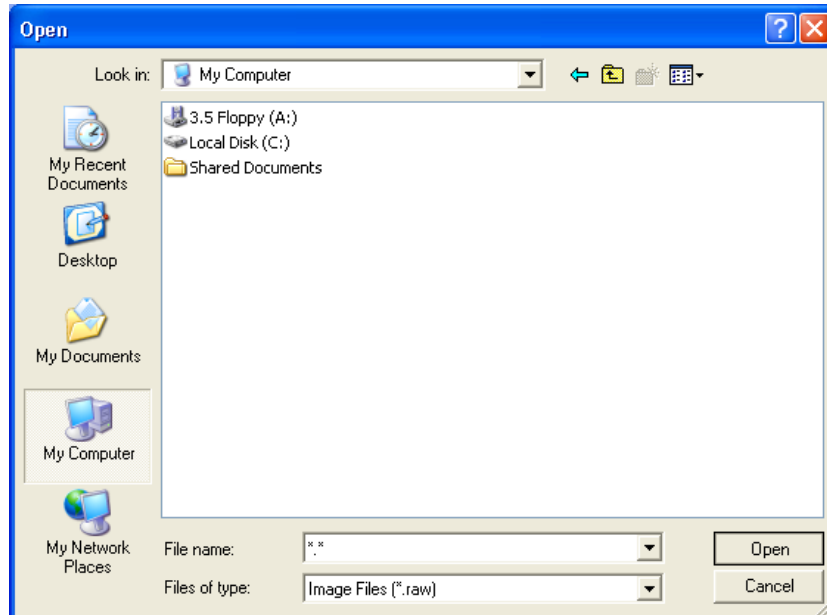
Step 3:

Open ImageWriter and select the USB disk from the list at the bottom



Step 4:

Press the "Select" button and select the file you have downloaded then press "Copy"



If you can't see the file, enter "*. *" in the "File name" field and press "Open" to see all files, then select the file and press "Open" again

Linux users (terminal) – USB:

Step 1:

Plug the USB drive in one of computer's USB ports

Step 2:

To identify USB disk's device name type: `ls -l /dev/disk/by-id/*usb*`

```

~> ls -l /dev/disk/by-id/*usb*
lrwxrwxrwx 1 root root 9 2011-03-28 10:53 /dev/disk/by-id/usb-HP_v125w_RG50PJ6722KST6ZH-0:0 -> ../../sdb
lrwxrwxrwx 1 root root 10 2011-03-28 10:53 /dev/disk/by-id/usb-HP_v125w_RG50PJ6722KST6ZH-0:0-part1 -> ../../sdb1
lrwxrwxrwx 1 root root 10 2011-03-28 10:53 /dev/disk/by-id/usb-HP_v125w_RG50PJ6722KST6ZH-0:0-part2 -> ../../sdb2
  
```

Step 3 (must be root):

From the example image above, sdb is the USB disk, located under /dev/sdb

Type `umount /dev/sdb` to unmount the device

Step 4 (must be root):

Type `dd_rescue /path/to/file/downloaded /dev/sdb` to write the USB disk

WARNING: Make sure you replace "sdb" of the example above with the appropriate drive. dd_rescue will erase all data of the device selected!

Installation process

Requirements:

For the installation procedure you will need:

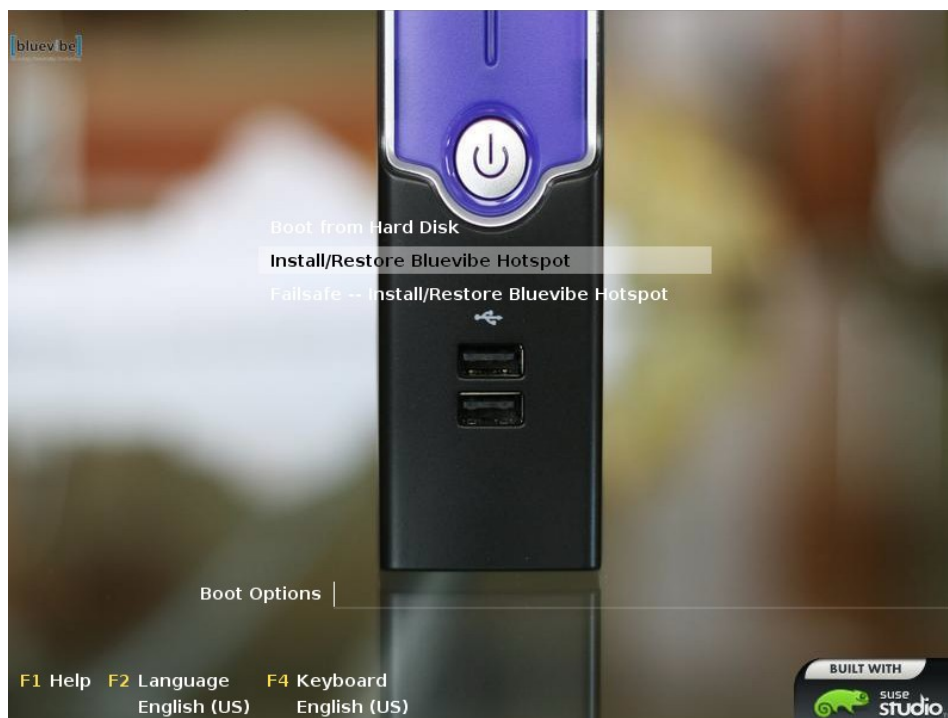
- A CD or USB disk with Bluevibe Hotspot burned on it. You can download it from [here](#).
- At least one valid Bluevibe Software License that you can purchase from our [online store](#).
- A computer, that you will use as the Bluevibe Hotspot. Preferably a **netbook** or **laptop**, for better mobility. Desktop PC or mini-PC is OK as well.
- A **monitor**, connected to the computer that you will install Bluevibe Hotspot on in case you don't use a laptop or netbook.
- A **keyboard**, also connected to the computer that you will install Bluevibe Hotspot on in case you don't use a laptop or netbook.
- An **ethernet** cable (UTP cable) in order to connect Bluevibe Hotspot to the Internet. Please note that your network should be **DHCP** enabled.
- Two or more usb Bluetooth dongles. You can use any Bluetooth adapter but for guaranteed results you can always purchase one of the [Bluevibe certified adapters](#).

Step 1:

Make sure your BIOS has a CD Drive/Flash disk (depending to the medium used) selected as first boot device. (Most BIOSs enter configuration menu by pressing the Delete button while the computer is starting, others use F2. Some netbooks/laptops may allow one time boot device selection by pressing F12 when they power up)

Step 2:

Once the boot menu is shown select "**Install/Restore Bluevibe Hotspot**"



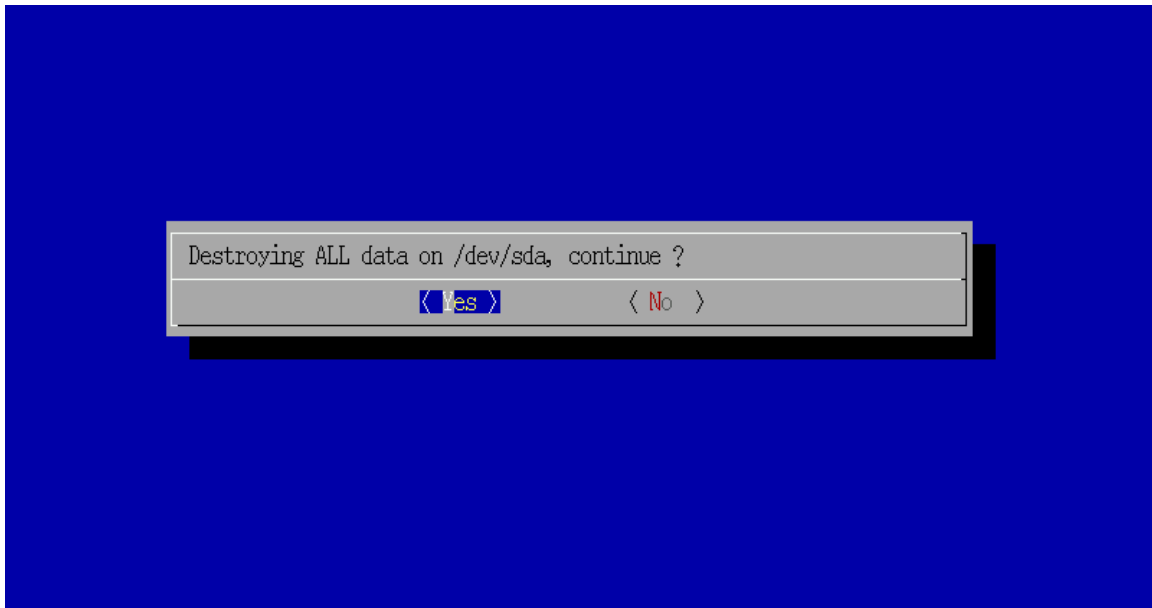
Step 3:

In case you have more than one hard disk drives in your computer you will be asked to select on which Bluevibe Hotspot will be installed. In case only one exist this step will be skipped

WARNING: Installing Bluevibe Hotspot will erase ALL data of the hard disk drive selected. Please BACKUP your data prior to installation.

Step 4:

Later you will be asked if you want to erase all data from your hard disk. In order for Bluevibe Hotspot to be installed the hard disk that will be used must be erased. After erasing data, Bluevibe Hotspot will be installed to the hard disk and a verification of the disk will follow. The procedure might take a few minutes to complete.



After step four the system will be started for the first time, so it might take a bit longer than normal.

Step 5:

Note: You can now remove the CD/Flash disk. You may also want to plug Bluetooth dongles on the computer, so that Hotspot will be ready to use just after activation finishes.

During first startup you will be asked to enter the provider name and the provider's password.

```
Dear customer,  
  
Thank you for purchasing a Bluevibe Hotspot.  
  
We have detected this is the first run of your Hotspot, during which we will need to register your hardware with our server.  
  
In order to ensure your Bluevibe customer account has the available Bluevibe Hotspot licence, please insert your username and password below:  
  
Note: Your account details will be sent through a secure connection (SSL) to our server. In case you cannot proceed using this wizard use the following code to register. MAC:  
00:00:00:00:00:00  
Username: _
```

You will be able to see the username you type, but while you type the password you will not be able to see the amount of characters typed.

For registration to succeed, you must

- have the hotspot connected to the internet
- have a license key available

In case registration fails more than 3 times hotspot will reboot, and registration will be asked again.

There are two possible error codes:

- **Error 000** means that connection could not be established with the server, please make sure you have the hotspot connected to the internet.
- **Error 400** means that the procedure failed, please make sure you have available licenses and that you import the correct username and password.

Step 6:

Note: You can now remove the monitor and the keyboard.

After a few seconds the hotspot will be ready to use. You can now start configuring your new campaign using <http://manager.bluevibe.net/>